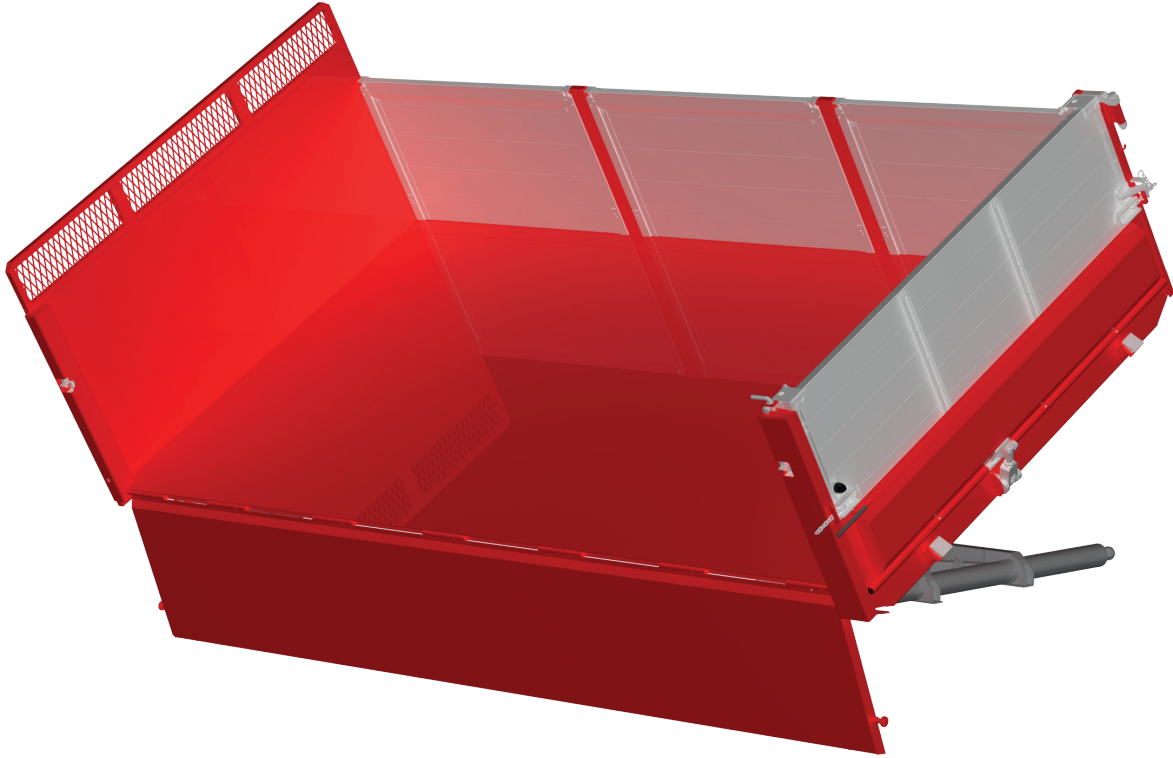


ZT4-M

Flat two-way tipping

MADE IN

SWEDEN



ZT4-M

Two-way tipper with fully openable side

The ZT4 Matic is a two-way tipper and is based on our durable ZT4 standard body. Thanks to the fully openable side, you can both tip and easily load goods from the side.

The Matic blade is made of steel and is controlled with three hydraulically operated cylinders and has hydraulic locking.

With a two-way tip, the area of use is wide and the flexibility of construction is sought after in the construction area.

PRODUKTFÖRDELAR

- Easy loading and tipping from the side.
- Wide range of use.
- Hydraulic lock construction.
- Light, strong and durable.
- The base in high-strength steel.
- Fully welded longitudinal beams for a stiff and light bottom.
- Lightly worked flap system with locking function on side flaps.
- Prepared for exhaust heating.
- Good protection against corrosion.

ZT4-M

Flat two-way tipping



Specification example

Length from 4000 to 6100 mm with 100 mm intervals.

Width outside 2550 alt. 2600 mm. Internal width depending on panel thickness.

Bottom 5 or 6 mm thick high-strength steel with longitudinal profiles prepared for exhaust gas heating.

Side sleeves in 25 alt. 40 mm anodized aluminum plank. Height from 600 mm to 1000 mm with 100 mm intervals. Matic side in steel.

Spreader gate in 40 mm anodised aluminum plank, front hung.

Front wall 100 mm higher than the sides, jointed front wall adapted to cab.

Construction height from upper edge of chassis frame to lower edge of bottom plate 350 mm for 2- and 3-axle and 400 mm for 4-axle chassis.

Automatic tailgate hydraulic operation. Height 400 mm.

Tipping cylinder undermounted hard-chromed telescopic cylinder.

Subframe of equal-sided cold-bent U-profiles reinforced with cross braces in the rear part. Carrying axles for 3-way tipping.

Characteristics

The flat bed is light and rigid in high-strength steel with longitudinal beams and fully welded bottom profiles.

Matic side made entirely of steel with two hydraulically operated cylinders.

Locking construction of side board is hydraulic with indication in cab.

Other options

Side tip with split side see product sheet for ZT4-Z.

Spreader release instead of automatic tailgate with combined spreader gate.

Exhaust heating of the bottom with pneumatically operated exhaust damper.

Asphalt plates for the automatic tailgate for extra overhang when feeding the asphalt paver.

Extension gates of 25 mm anodized aluminum plank, type on stick.

Automatic tailgate height 250 mm.

Automatic tailgate with pneumatic control.

Spreader gate can be opened as a door.

