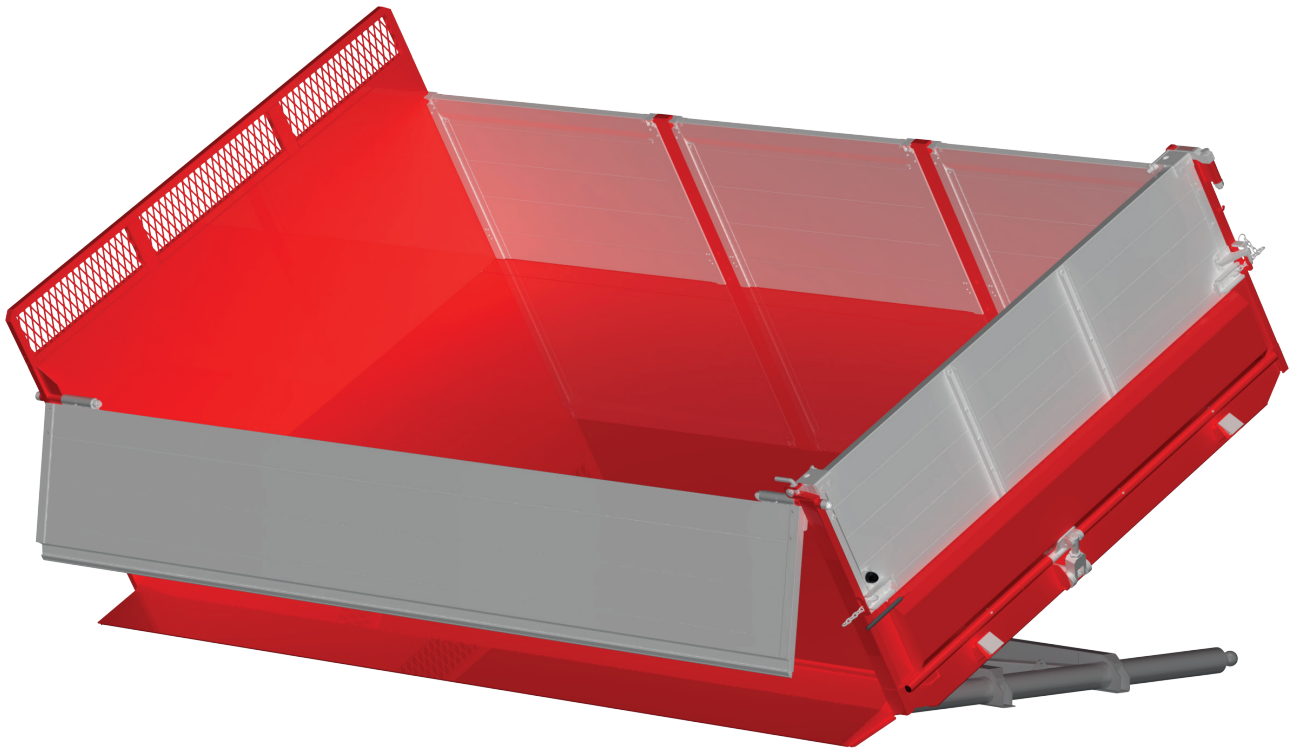


ZT4-Z

Flat two-way tipping

MADE IN

SWEDEN



ZT4-Z

Tipping bed with convenient side tipping

The ZT4 Zetmatic is a two-way tipper and is based on our durable ZT4. Zetmatic is the choice for you who tip frequently and want to do it comfortably, with maneuvering from the cab.

The lower Zetmatic side gate is controlled by two double-acting hydraulic cylinders and is made of high-strength steel. It has a fixed height measurement and widens the bed when tipping, which means that the tipping mass ends up further away from the car and reduces the risk of vehicle damage and blocking of wheels.

PRODUCT BENEFITS

- Convenient side tipping.
- Lower side gate in steel protects the vehicle from tipping mass. Upper board in aluminum.
- Light, strong and durable.
- The base in high-strength steel.
- Fully welded longitudinal beams for a stiff and light bottom.
- Lightly worked flap system with locking function on side flaps.
- Prepared for exhaust heating.
- Good protection against corrosion.

ZT4-Z

Flat two-way tipping



Specification example

Length from 4000 to 6100 mm with 100 mm intervals.

Width outside 2550 alt. 2600 mm. Internal width depending on panel thickness.

Bottom 5 or 6 mm thick in high strength steel with longitudinal profiles prepared for exhaust gas heating.

Side boards in 25 alt. 40 mm anodized aluminum plank. Height from 600 mm to 1200 mm with 100 mm intervals.

Spreader gate in 40 mm anodised aluminum plank, front hung.

Front wall 100 mm higher than the sides, jointed front wall adapted to cab.

Construction height from upper edge of chassis frame to lower edge of bottom plate 350 mm for 2- and 3-axle and 400 mm for 4-axle chassis.

Automatic tailgate hydraulic operation. Height 400 mm.

Tipping cylinder undermounted hard-chromed telescopic cylinder.

Subframe of equal-sided cold-bent U-profiles reinforced with cross braces in the rear part. Carrying axles for 3-way tipping.

Characteristics

The flatbed is light and rigid in high-strength steel with longitudinal beams and fully welded bottom profiles.

Lower Zetmatic side gate made of high-strength steel with two hydraulically operated cylinders. Operated from the cab. Fixed height measurement 395 mm.

Upper side board made of aluminum plank with suspension points front and rear. The bottom aluminum plank with a special design that creates a smooth side without protruding details.

Indication of locked Zetmatic side gate with micro switch and control light mounted in cab.

Other options

Spreader release instead of automatic tailgate with combined spreader gate.

Exhaust heating of the bottom with pneumatically operated exhaust damper.

Asphalt plates for the automatic jointer for extra overhang when feeding the asphalt paver.

Extensions gates of 25 mm anodized aluminum plank, type on stick.

Automatic tailgate height 250 mm. Automatic tailgate with pneumatic control.

Spreader gate can be opened as a door.

ZETTERBERGS